



Prislista MuscleLab Power. Alla priser är exklusive moms. 2017-01-01 till 2017-06-01

Mätning av styrka och power

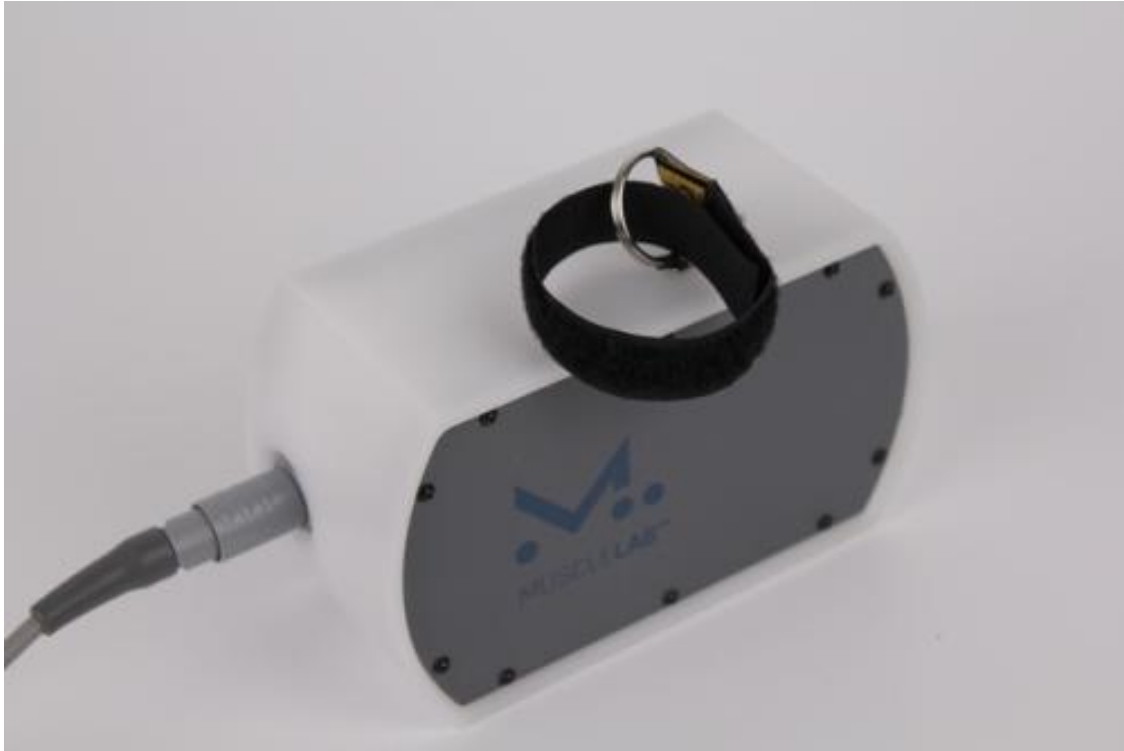


SDI – is short for “**S**ingle **D**ata **I**nterface” and is a simpler version of the **DSU**. The SDI has only one port for connection for sensors or accessories.

The SDI has an USB port for connection to PC in one end and connector for a **MUSCLELAB** device in the other end.

You may connect SDI with any **MUSCLELAB** device, like Encoder, IR-mat, RF-Host etc.

Pris 5 115 kr



Linear displacement sensor, the Encoder

Connect the string of the encoder to a moving object, such as a barbell, a weight stack of a training machine etc., and measure displacement, velocity, power and more. This versatile sensor is a core component of the **MUSCLELAB** system

- Range (string) 0-3.5m
- Resolution 0.019mm
- Sample rate 200Hz

Pris 15 130 kr

Mätning av hoppförmåga. SJ, CMJ, CMJas, Dropjump, Endurance jump



Infrared optical contact mat

For jumping or, if combined with laser, for running analysis

The product consists of two units, MASTER and SLAVE, which together creates a “carpet” of infrared light a few millimeters above the floor.

When the light beams are interrupted the time is recorded, thus allowing detection of contact and flight times.

The data allows calculation of Jump height, stiffness, power etc.

- Width 870mm
- Range 3-40m
- Resolution < 2ms

Pris 17 220 kr

Mätning av sprintförmåga trådlöst inklusive stands till fotoceller

1 mättid = 2 fotoceller

2 mättider = 3 fotoceller

3 mättider = 4 fotoceller



ML Timing gate, wireless

Wireless range >100m

Resolution < 2ms

Pris 7 180 kr 1 fotocell



ML RF Host -868

Needed for SDI for communication with ML Timing gates.

NB! DSU has built in RF Host-868

Communicates with up to 10 Timing gates simultaneously

Pris 3 910 kr

Kenneth Riggberger

0707-964632

info@riggbergersport.dinstudio.se